



CATALOGUE 2025/26



IGMAN D.D. KONJIC

BOSNIA AND HERZEGOVINA





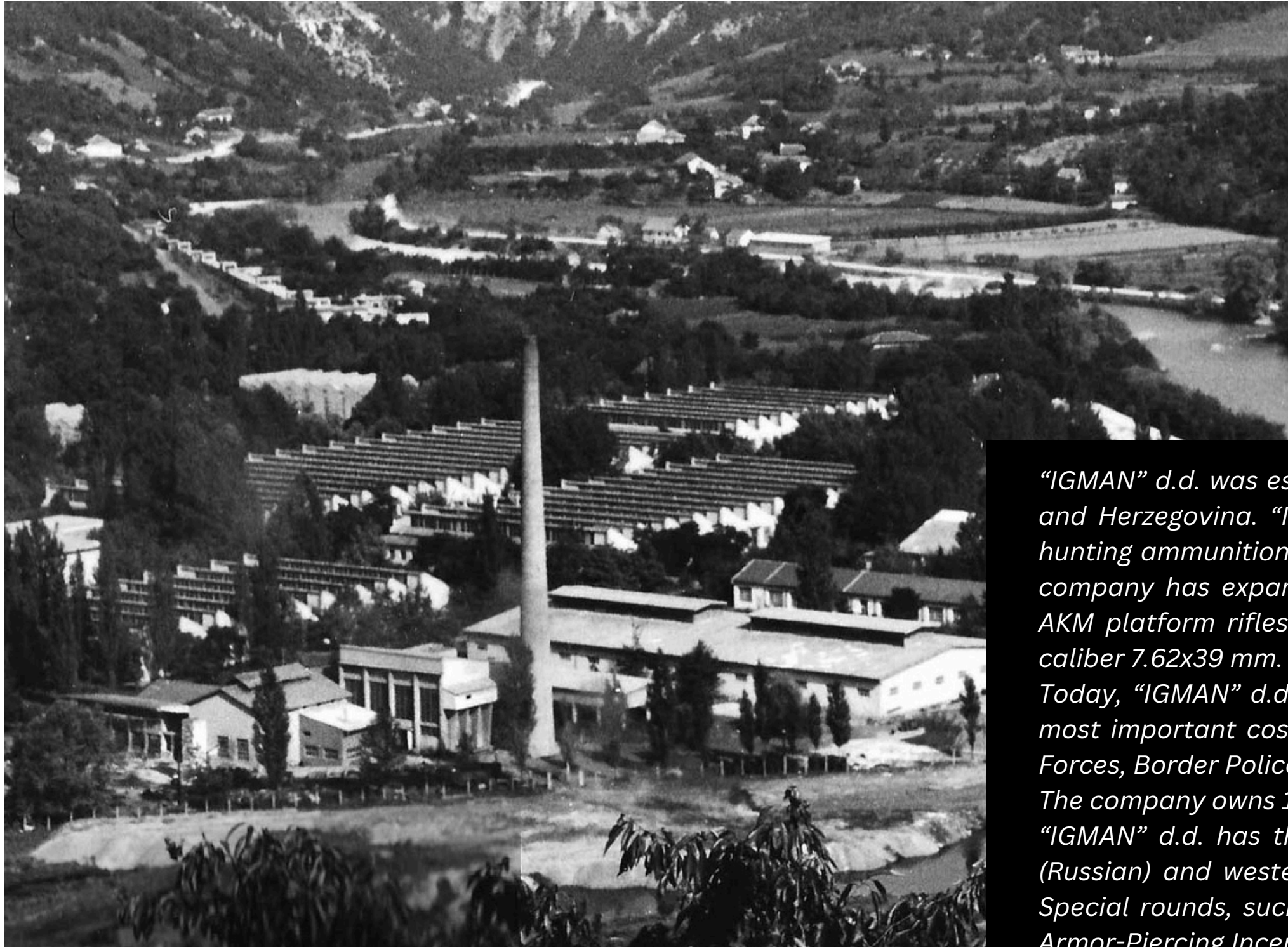
- ABOUT THE COMPANY 4
- WHERE BOSNIA MEETS HERZEGOVINA 5
- PRODUCTION, STORAGE AND TESTING FACILITIES 6
- CORPORATE SOCIAL RESPONSIBILITY, VISION AND MISSION 7

- CALIBER 9x19 mm 8
- CALIBER 5.56X45 mm 10
- CALIBER 7.62X39 mm 18
- CALIBER 7.62x51 mm 24
- CALIBER 7.62X54 mm R 32
- CALIBER 7.62X63 mm 38
- CALIBER 7.9X57 mm 42
- CALIBER 12.7X99 mm 44
- CALIBER 12.7X108 mm 54

- CERTIFICATES 58



ABOUT THE COMPANY



“IGMAN” d.d. was established on the 6th of March 1950 and is based in Konjic, Bosnia and Herzegovina. “IGMAN’s” production program consists of variety of military and hunting ammunition and calibres (5.56 mm, 7.62 mm, 9 mm, 12.7 mm). Since 2024, the company has expanded its product portfolio to include the production of parts for AKM platform rifles with a goal to offer the whole rifle in the future called IK20 in caliber 7.62x39 mm.

Today, “IGMAN” d.d. exports products to more than 50 countries worldwide with the most important costumers being Ministries of Defence, Ministries of Interior, Special Forces, Border Police Agencies and many more.

The company owns 16,000 sqm of production and auxiliary facilities.

“IGMAN” d.d. has the capability to produce ammunition according to both eastern (Russian) and western (NATO) standards, a rarity among manufacturers worldwide. Special rounds, such as Tracer, Armor-Piercing (AP), Armor-Piercing Incendiary (API), Armor-Piercing Incendiary Tracer (APIT), and Solid are also distinguishing features that set us apart from other companies in this industry.

Ownership Structure: 51% State owned, 49% owned by private investors.





WHERE BOSNIA MEETS HERZEGOVINA

PRODUCTION, STORAGE AND TESTING FACILITIES

IGMAN ammunition factory owns 11,200 sqm of production facilities equipped with primary production equipment. In addition, IGMAN owns around 5,000 sqm of facilities for thermal processing of steel core and links, battery charging, production of spare parts and tools, electrical maintenance, production of steel core on automated milling machines, packaging, pyrotechnic mixture preparation, labeling and printing, mechanical testing, archives and administration.

The factory owns 2,177 sqm of storage space for finished products (eight facilities with properly packaged products arranged in stocks).

The polygon for ballistic and functional ammunition testing of 2,000 sqm. This area includes facilities and tunnels where experiments on semi-finished and finished products are performed. For testing that requires distance to target in excess of 300 m, we use an offsite testing facility with range distance 3,500 m.



Our ammunition is in accordance with:

STANDARD AMMO

AOP-4090 TECHNICAL PERFORMANCE SPECIFICATION PROVIDING FOR THE INTERCHANGEABILITY OF 9 mm x 19 AMMUNITION

AOP-4172 TECHNICAL PERFORMANCE SPECIFICATION PROVIDING FOR THE INTERCHANGEABILITY OF 5,56 mm x 45 AMMUNITION

AOP-2310 TECHNICAL PERFORMANCE SPECIFICATION PROVIDING FOR THE INTERCHANGEABILITY OF 7,62 mm x 51 AMMUNITION AND LINKS

AOP-4383 TECHNICAL PERFORMANCE SPECIFICATION PROVIDING FOR THE INTERCHANGEABILITY OF 12,7 mm x 99 AMMUNITION AND LINKS

AEP-97 MULTI-CALIBRE MANUAL OF PROOF AND INSPECTION (M-CMOPI) FOR SMALL ARMS AMMUNITION

NON-STANDARD AMMO

MANUFACTURER'S TECHNICAL SPECIFICATIONS



CORPORATE SOCIAL RESPONSIBILITY, VISION AND MISSION

In modern business, goals of an enterprise always include the obligations towards the community in which the company operates. IGMAN d.d. Konjic, as an important contributing factor to economic development in Bosnia and Herzegovina, will continue to provide significant funds for humanitarian purposes and sponsorship of cultural and sports events, and support specific NGO projects, primarily focusing on the local community. The corporate social responsibility towards the community and development of full cooperation with the community continue to be the permanent focus of IGMAN.

VISION: DEVELOPMENT OF OUR TOP QUALITY RANGE OF PRODUCTS THROUGH INVESTMENT IN MODERN PRODUCTION FACILITIES AND MEETING QUALITY AND DELIVERY DEMANDS IN THE MOST DEMANDING MARKETS IN THE WORLD.

MISSION: PRODUCTION AND DISTRIBUTION OF DEFENSE INDUSTRY PRODUCTS IN ACCORDANCE WITH PREDEFINED QUALITY STANDARDS, ENCOURAGING CONTINUOUS DEVELOPMENT OF OUR EMPLOYEES, DEVELOPMENT OF TEAMWORK AND BUILDING THE COMPANY IMAGE.



9 X 19



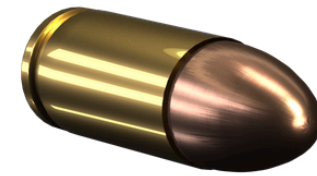
Cal. 9x19 mm



FMJ 124 gr (8 g)

FMJ 115 gr (7,45 g)

FMJ 147 gr (9,5 g) IPSC



BALISTIC DATA

Used for civilian purposes for 9x19 mm caliber weapons

Cal. 9x19 mm with bullet	Energy (J)	V _{4.5} (m/s)	P (bar)	Accuracy mean radius (cm) at 46 m
FMJ 124 gr (8 g)	-	350 ± 15	max. 2350	max. 7,6
FMJ 115 gr (7,45 g)	-	360 ± 15	max. 2350	max. 7,6

Used for military purposes for 9x19 mm caliber weapons

Cal. 9x19 mm with bullet	Energy (J) at 16 m from the muzzle	V ₁₆ (m/s)	P+3Sd (bar)	Accuracy Sdx/Sdy (cm) at 46 m
FMJ 124 gr (8 g)	491 - 713	370 ± 10	max. 2850	max. 5,0
FMJ 115 gr (7,45 g)	491 - 713	380 ± 10	max. 2850	max. 5,0

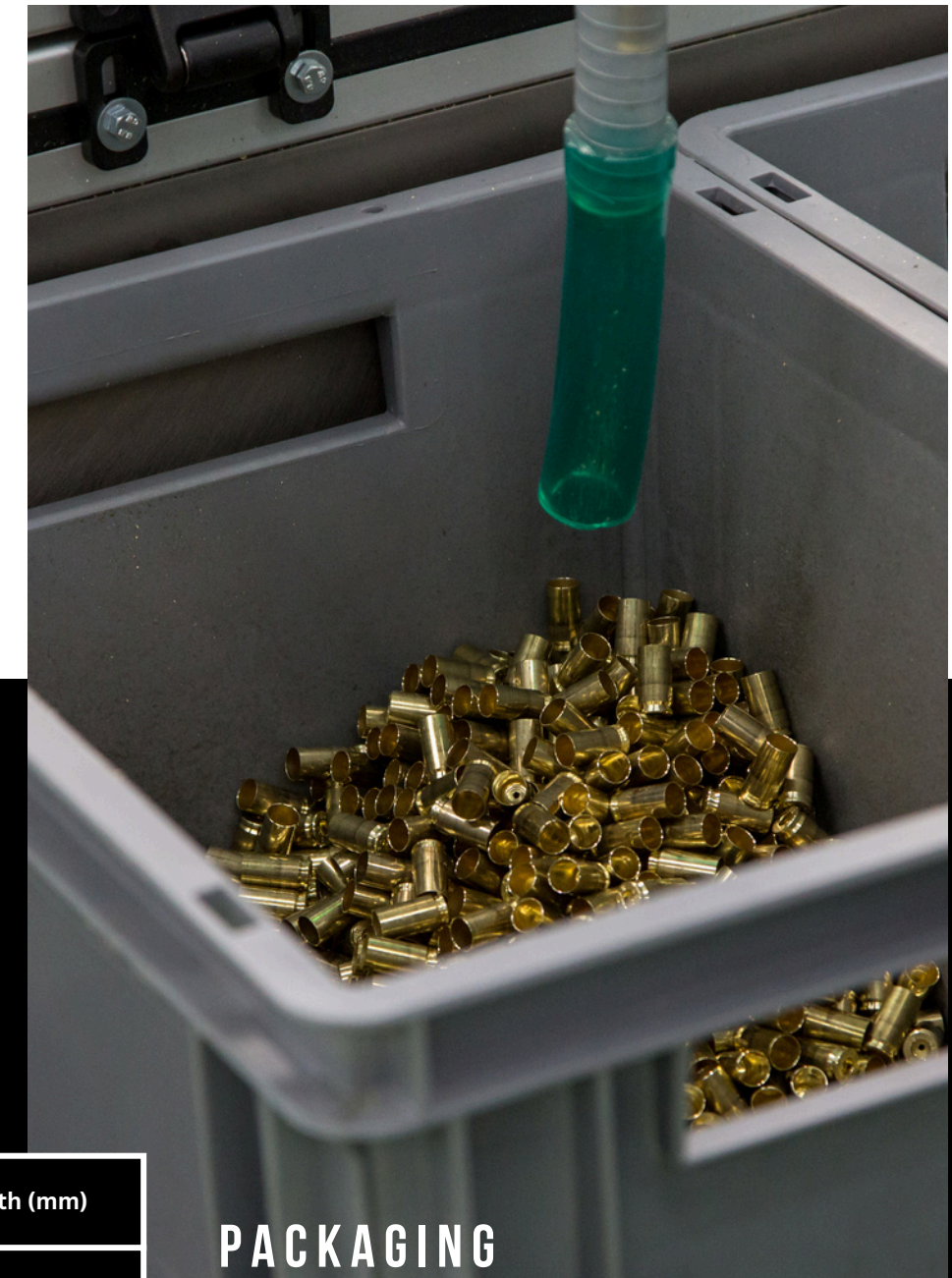
Used for competition for 9x19 mm caliber weapons

Cal. 9x19 mm with bullet	P (bar)	Coefficient
FMJ 147 gr (9,5 g) IPSC	max. 2350	$\frac{m(\text{grain}) \times V(\text{ft/s})}{1000} \geq 125$



TECHNICAL DATA

Element	Material	Weight	Length (mm)
Bullet	Jacket	Tombac CuZn10 or Brass CuZn30	FMJ 124 gr (8,00 g) 15,8
	Core	Lead antimony	FMJ 115 gr (7,45 g) 15,0
Cartridge case	Brass CuZn28	~3,90	19,1
Propelling charge	Spherical powder	~0,35	-
Primer	Small pistol, Boxer, non-corrosive	0,23	3,10
Cartridge		Average Q (100) ± 0,3 g	29,69-0,69



PACKAGING

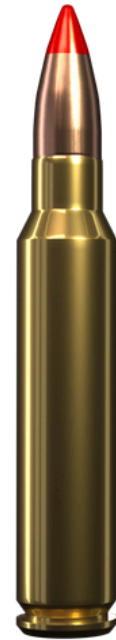
Version 1	Version 2
<ul style="list-style-type: none"> • 50 rounds in PVC separator • 1 PVC separator in cardboard box • 20 cardboard boxes in metal box M2A1 (1000 rounds) • 2 metal boxes (2000 rounds) in wooden crate 	<ul style="list-style-type: none"> • 50 rounds in PVC separator • 1 PVC separator in cardboard box • 20 cardboard boxes in carton case



5 . 5 6 X 4 5



Cal. 5.56x45 mm



M193 BALL

M196 TRACER

M855/SS109

M856 TRACER



TECHNICAL DATA

Element	Material				Weight (g)				Length (mm)				
	M193 Ball	M196 Tracer	M855/SS109	M856 Tracer	M193 Ball	M196 Tracer	M855/SS109	M856 Tracer	M193 Ball	M196 Tracer	M855/SS109	M856 Tracer	
Bullet	Jacket	Tombac	Tombac plated steel strip or copper washer steel strip	Tombac	Tombac plated steel strip or copper washer steel strip	3, 56	3, 50	4, 00	3, 92	19, 17	23, 2	23, 4	28, 45
	Core	Lead antimony	Lead antimony	Lead antimony and steel	Lead antimony	(55 gr)	(54 gr)	(62 gr)	(61 gr)				
	Tracer mixture	-	Tracer compos.	-	Tracer compos.								
	Cup, closure	-	Tombac	-	Tombac								
Cartridge case	Brass				~6,10				44, 70				
Propelling charge	Spherical powder				~1,64	~1,69	~1,60	~1,36	-				
Primer	Boxer non-corrosive				0, 23				3, 10				
Cartridge					Average Q (100) ± 0,4 g				57, 40				

BALISTIC DATA

Cal. 5.56x45 mm with bullet	Energy (J)	V _{23,77} (m/s)	P (bar)	Accuracy mean radius (cm) at 183 m	Tracer visibility
M193 Ball	-	964,7 ± 12	max. 3792	max. 5,08	-
M196 Tracer	-	949,5 ± 12	max. 3792	max. 12,7	Visible trace from max. 69 m to min. 457 m from the weapon

Used for 5.56x45 mm caliber weapon with a 1:12" twist barrel

Cal. 5x56x45 mm with bullet	Energy (J) at 24 m from the muzzle	V _{23,77} (m/s)	P+3Sd (bar)	Accuracy Sdx/Sdy (cm) at 550 m	Tracer visibility
M855/SS109	min. 1480	920,5 ± 12	max. 4450	max. 20	-
M856 Tracer	min. 1480	917,4 ± 12	max. 4450	max. 30	Dim trace to min. 13 m from the weapon, visible from max. 140 m to min. 600 m from the weapon

Used for 5.56x45 mm caliber weapon with a 1:7" twist barrel

Penetration M855/SS109: Bullets shall completely perforate the mild steel plate 3,5 mm nominal (10 gauge) thickness, defined in SAE 1010 or SAE 1020, Rockwell hardness, minimum B 55, maximum B 70, placed 570 m from the muzzle at 0 degree obliquity (normal to the line of fire).

PACKAGING

Version 1	Version 2	Version 3	Version 4
<ul style="list-style-type: none"> • 20 rounds in cardboard box • 50 cardboard boxes (1000 round) in metal box M2A1 • 2 metal boxes (2000 rounds) in wooden crate 	<ul style="list-style-type: none"> • 20 rounds in cardboard box • 10 cardboard boxes (200 rounds) in PVC bag • 5 PVC (1000 rounds) bags in carton case 	<ul style="list-style-type: none"> • 200 rounds in metal link belt (M27) • 4 metal link belts in metal box M2A1 (800 rounds) • 2 metal boxes in wooden crate (1600 rounds) 	<ul style="list-style-type: none"> • 20 rds in a clip • 5 clips in a cardboard box • 20 cardboard boxes in a metal box M2A1 • 2 metal boxes in wooden crate



5 . 5 6 X 4 5 H P

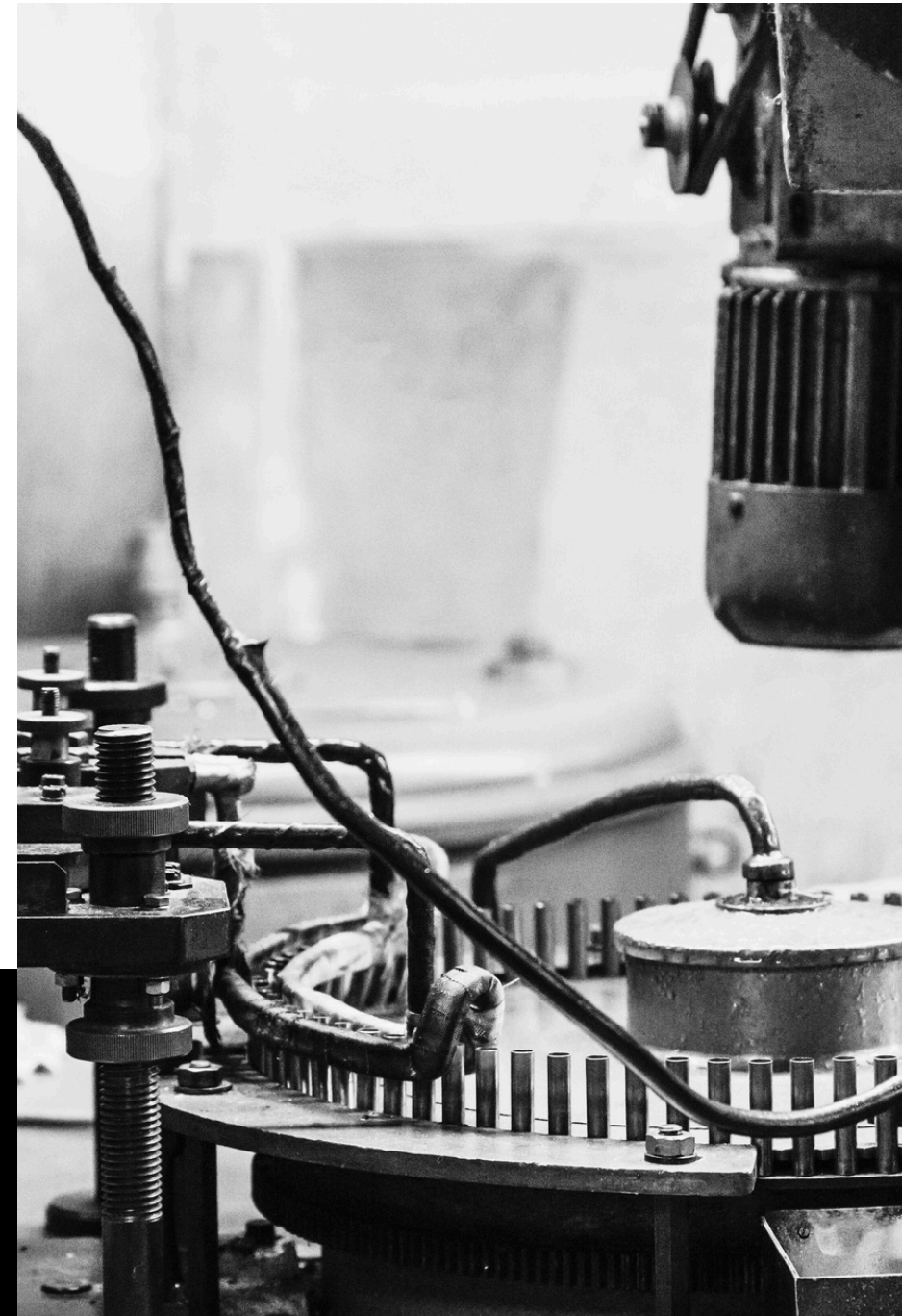
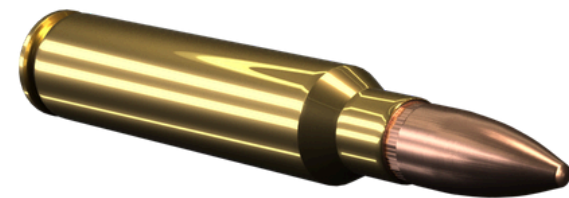




Cal. 5.56x45 mm

HP (High Pressure)

bullet weight 5,5 g (85 gr)



BALISTIC DATA

Cal. 5.56x45 mm with bullet weight 5,5 g (85 gr)	P (bar)
	4836 ± 207

TECHNICAL DATA

Element		Material
Bullet	Jacket	Tombac
	Core	Lead antimony
Cartridge case		Brass
Propelling charge		Spherical powder
Primer		Boxer non-corrosive

PACKAGING

Version 1	Version 2
<ul style="list-style-type: none"> • 20 rounds in cardboard box • 50 cardboard boxes in metal box M2A1 • 2 metal boxes (2000 rounds) in wooden crate 	<ul style="list-style-type: none"> • 20 rounds in cardboard box • 10 cardboard boxes (200 rounds) in PVC bag • 10 PVC (2000 rounds) bags in wooden case

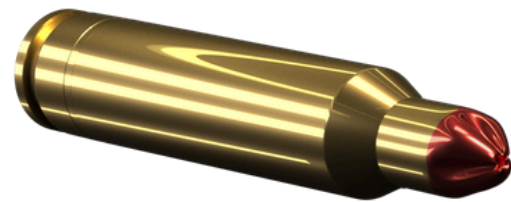


5 . 5 6 B L A N K



Cal. 5.56 mm

M200 BLANK



BALISTIC DATA

Cyclic rate			
Weapon	BFA	Min.	Max.
M16A1 & M16A2 Rifles	M15A2	550	920
M249 Machine Gun	M15A2	650	950

Used for 5.56X45 mm caliber weapons

TECHNICAL DATA

Element	Material	Weight (g)	Length (mm)
Cartridge case	Brass	~6,20	48, 6
Propelling charge	For blank ammunition	~0,50	-
Primer	Boxer non-corrosive	0, 23	3, 10
Cartridge		Average Q (100) ± 0,4 g	53, 5

PACKAGING

Version 1	Version 2	Version 3
<ul style="list-style-type: none"> • 20 rounds in cardboard box • 57 cardboard box (1140 rounds) in metal box M2A1 • 2 metal boxes (2280 rounds) in wooden crate 	<ul style="list-style-type: none"> • 20 rounds in cardboard box • 10 cardboard boxes (200 rounds) in PVC bag • 5 PVC bags (1000 rounds) in carton case 	<ul style="list-style-type: none"> • 200 rounds in metal link belt (M27) • 4 metal link belts (800 rounds) in metal box M2A1 • 2 metal boxes (1600 rounds) in wooden crate



5 . 5 6 B L A N K



Cal. 5.56 mm

M200A1 BLANK



BALISTIC DATA

Cyclic rate			
Weapon	BFA	Min.	Max.
M16A1 & M16A2 Rifles	M15A2	550	920
M249 Machine Gun	M15A2	650	950

Used for 5.56X45 mm caliber weapons

TECHNICAL DATA

Element	Material	Weight (g)	Length (mm)
Cartridge case	Brass	~6,74	53,7
Propelling charge	For blank ammunition	~0,46	-
Primer	Boxer non-corrosive	0,23	3,10
Cartridge		Average Q (100) ± 0,4 g	53,5

PACKAGING

Version 1	Version 2	Version 3
<ul style="list-style-type: none"> • 20 rounds in cardboard box • 57 cardboard box (1140 rounds) in metal box M2A1 • 2 metal boxes (2280 rounds) in wooden crate 	<ul style="list-style-type: none"> • 20 rounds in cardboard box • 10 cardboard boxes (200 rounds) in PVC bag • 5 PVC bags (1000 rounds) in carton case 	<ul style="list-style-type: none"> • 200 rounds in metal link belt (M27) • 4 metal link belts (800 rounds) in metal box M2A1 • 2 metal boxes (1600 rounds) in wooden crate



7 . 6 2 X 3 9



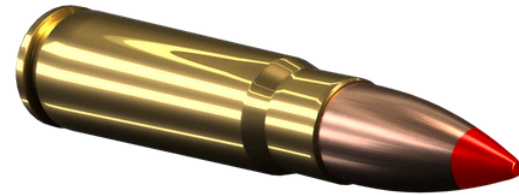
Cal. 7.62x39 mm



M67 BALL

M78 TRACER

AP



TECHNICAL DATA

Element	Material			Weight (g)			Length (mm)			
	M67 Ball	M78 Tracer	AP	M67 Ball	M78 Tracer	AP	M67 Ball	M78 Tracer	AP	
Bullet	Jacket	Tombac	Tombac	Tombac	8, 00 (123 gr)	7, 70 (119 gr)	8, 00 (123 gr)	23, 70	27, 40	25, 30
	Core	Lead antimony	Lead antimony	Lead antimony and steel						
	Tracer mixture	-	Tracer compos.	-						
	Cup, closure	-	Tombac	-						
	Tube	-	Tombac	-						
	Filler	-	-	-						
Liner	-	-	-							
Cartridge case	Brass			~ 7,40			38, 65			
Propelling charge	Spherical powder			~ 1,67	~ 1,62	~ 1,70	-			
Primer	Boxer non-corrosive			0, 34			3, 30			
Cartridge				Average Q (100) ± 1 g			55, 80			

BALISTIC DATA

Cal. 7.62x39 mm with bullet	V _{23,77} (m/s)	P (bar)	Accuracy mean radius (cm) at 300 m	Tracer visibility
M67 Ball	737 ± 15	max. 3600	max. 11	-
M78 Tracer	706 ± 15	max. 3600	max. 22	Dim trace to min. 15 m from the weapon, visible from max. 115 m to min 800 m from the weapon
AP	733 ± 15	max. 3600	max. 15	-

Used for 7.62x39 mm caliber weapon

Penetration AP: The bullet shall demonstrate complete penetration of 6 mm thick armor plate, min. 420 HB, located 100 meters from the weapon.

PACKAGING

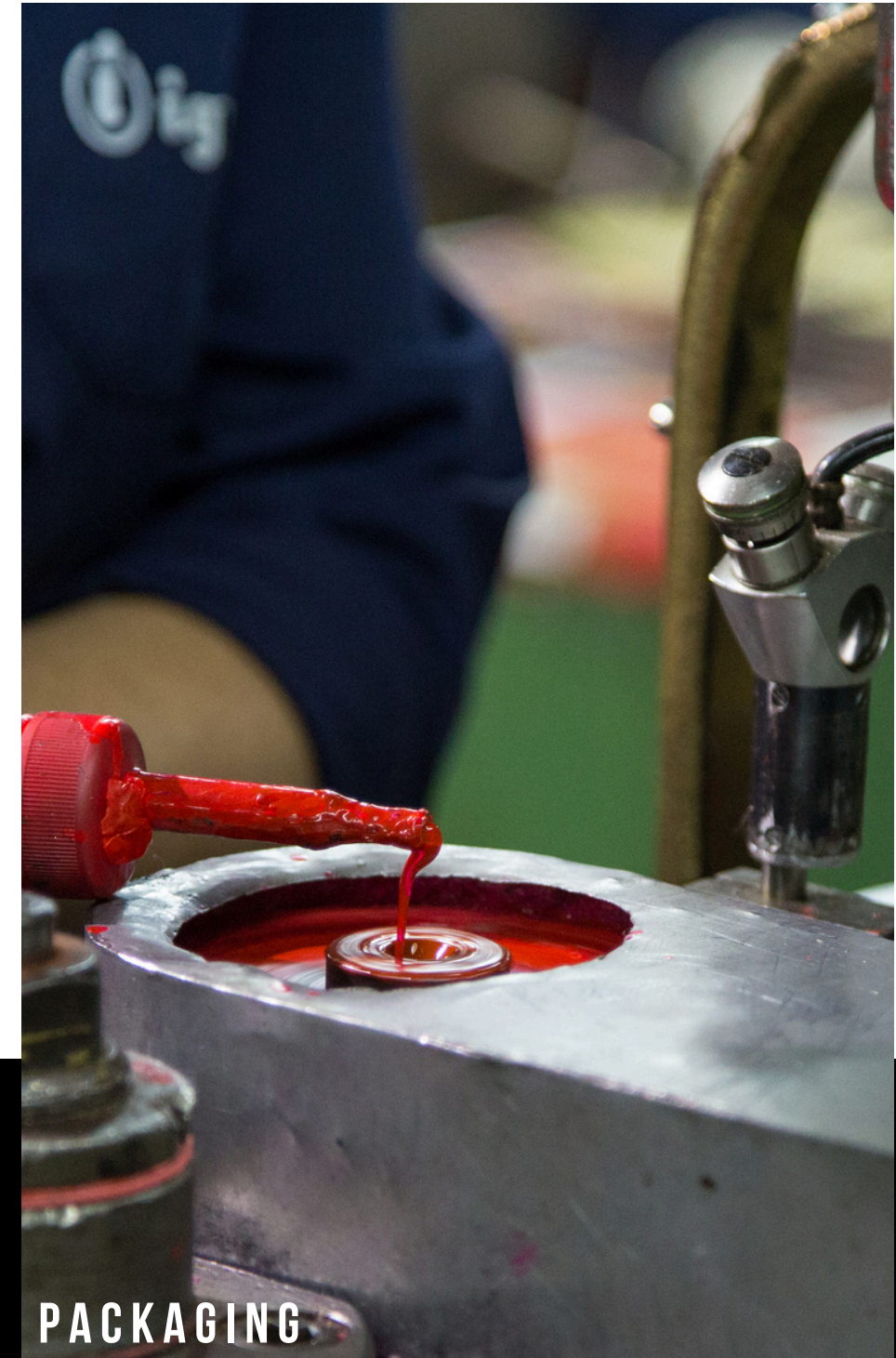
Version 1	Version 2
<ul style="list-style-type: none"> • 15 rounds in cardboard box • 54 cardboard boxes (810 rounds) in metal box M2A1 • 2 metal boxes (1620 rounds) in wooden crate 	<ul style="list-style-type: none"> • 15 rounds in cardboard box • 8 cardboard boxes (120 rounds) in PVC bag • 7 PVC bags (840 rounds) in carton case



7 . 6 2 B L A N K

Cal. 7.62 mm

M68 BLANK



PACKAGING

Version 1	Version 2
<ul style="list-style-type: none"> • 15 rounds in cardboard box • 69 cardboard boxes (1035 rounds) in metal box M2A1 • 2 metal boxes (2070 rounds) in wooden crate 	<ul style="list-style-type: none"> • 15 rounds in cardboard box • 8 cardboard boxes (120 rounds) in PVC bag • 8 PVC bags (960 rounds) in carton case

BALISTIC DATA

Cyclic rate

The cartridges shall operate the AK 47 (M70) rifles at cyclic rate of not less than 475 cartridges per minute.

TECHNICAL DATA

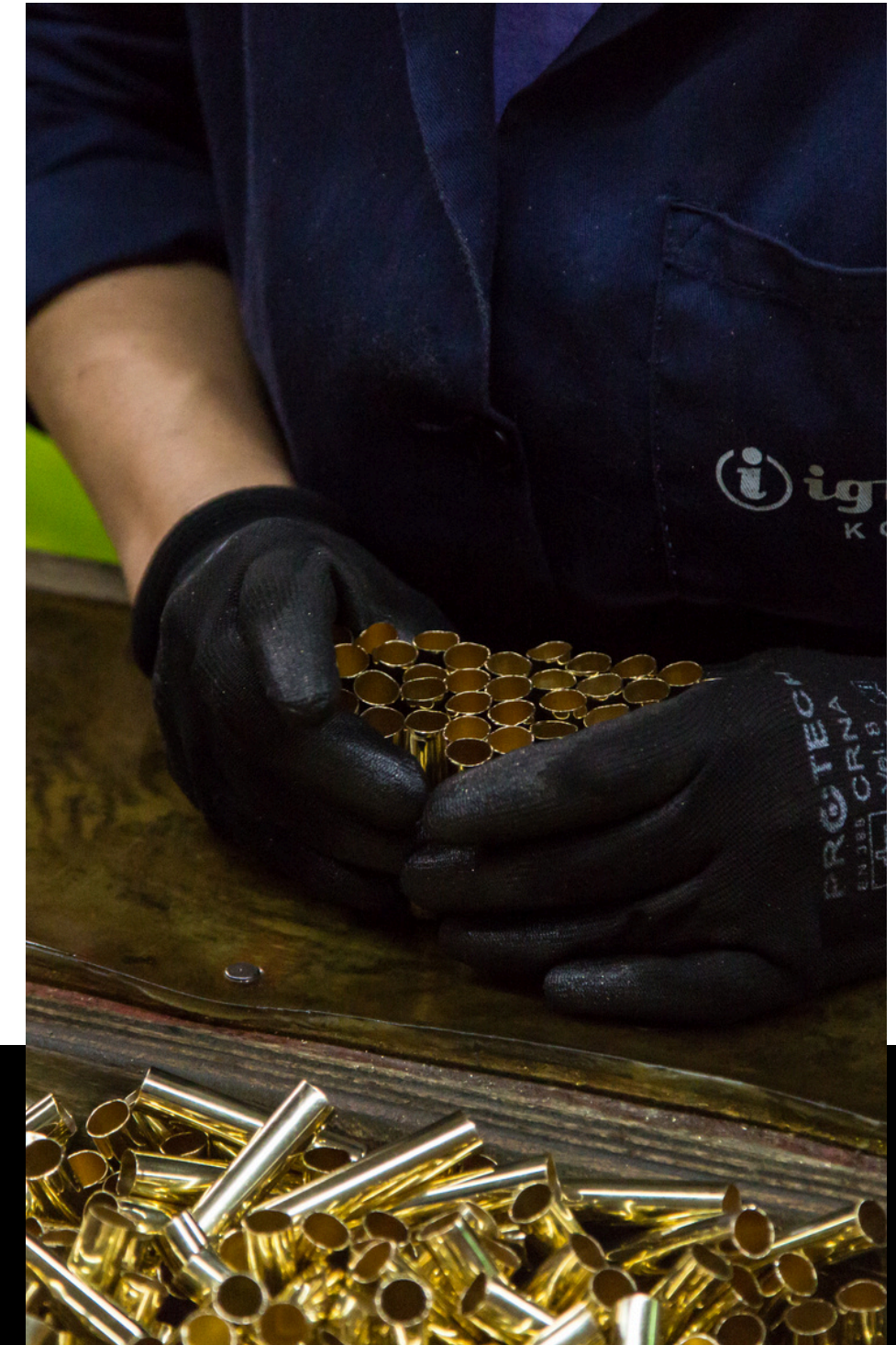
Element	Material	Weight (g)	Length (mm)
Cartridge case	Brass	~8,10	49,5
Propelling charge	For blank ammunition	~0,80	-
Primer	Boxer non-corrosive	0,34	3,30
Cartridge		Average Q (100) ± 0,4 g	49,2



7 . 6 2 B L A N K

Cal. 7.62 mm

IGNITION CHARGE FOR RIFLE GRENADE



BALISTIC DATA

P (bar)	V ₆ (m/s)
max. 1570	59,5 ± 0,5

TECHNICAL DATA

Element	Material	Weight (g)	Length (mm)
Cartridge case	Brass	~8,55	55, 8
Propelling charge	NC powder	~2,38	-
Primer	Boxer non-corrosive	0, 34	3, 30
Cartridge		Average Q (100) ± 0,4 g	55, 5

PACKAGING

Version 1
<ul style="list-style-type: none"> • 15 rounds in cardboard box • 10 cardboard boxes in PVC foil



7 . 6 2 X 5 1



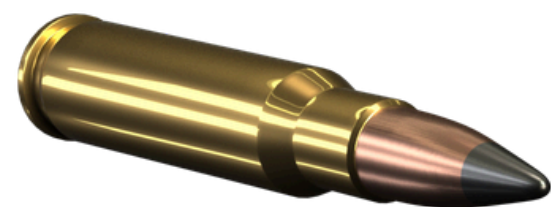


Cal. 7.62x51 mm

M80 BALL

M62 TRACER

M61 AP



BALISTIC DATA

Cal. 7.62x51 mm with bullet	Energy (J) at 24 m from the muzzle	$V_{23,77}$ (m/s)	P+3Sd (bar)	Accuracy Sdx/Sdy (cm) at 550 m	Tracer visibility
M80 Ball	min. 2756	833,6 ± 9,1	max. 4450	max. 20	-
M62 Tracer	min. 2756	812,3 ± 9,1	max. 4450	max. 30	Dim trace to min. 13 m from the weapon, visible from max. 140 m to min. 775 m from the weapon
M61 AP	min. 2756	833,6 ± 9,1	max. 4450	max. 20	-

Used for 7.62x51 mm weapon caliber

Penetration M80 Ball: The bullet shall completely perforate the mild plate 3,5 mm nominal (10 gauge) thickness, defined in SAE 1010 or SAE 1020, Rockwell hardness, minimum B55, maximum B70, the plate shall be placed 550m from the muzzle at 0 degree obliquity (normal to the line of fire).

Penetration M61 AP: The bullet shall demonstrate complete penetration of 6 mm thick armor plate, min.420 HB, located 100 meters from the weapon.

Element		Material			Weight (g)			Length (mm)		
		M80 Ball	M62 Tracer	M61 AP	M80 Ball	M62 Tracer	M61 AP	M80 Ball	M62 Tracer	M61 AP
Bullet	Jacket	Tombac	Tombac	Tombac	9, 67 (149 gr)	9, 46 (146 gr)	9, 55 (147 gr)	29, 46	34, 29	32, 90
	Core	Lead antimony	Lead antimony	Lead antimony and steel						
	Tracer mixture	-	Tracer compos.	-						
	Cup, closure	-	Tombac	-						
Cartridge case		Brass			~11,50			51, 18		
Propelling charge		Spherical powder			~2,85	~2,80	~2,82	-		
Primer		Boxer non-corrosive			0, 34			3, 30		
Cartridge					Average Q (100) ± 1 g			71, 12		

PACKAGING

Version 1	Version 2	Version 3	Version 4
<ul style="list-style-type: none"> • 20 rounds in cardboard box • 28 cardboard boxes (560 rounds) in metal box M2A1 • 2 metal boxes M2A1(1120 rounds) in wooden crate 	<ul style="list-style-type: none"> • 20 rounds in cardboard box • 10 cardboard boxes (200 rounds) in PVC bag • 5 PVC bags (1000 rounds) in carton case 	<ul style="list-style-type: none"> • 250 rounds in metal link belt M13 • 2 metal link belts in metal box M2A1 • 2 metal boxes M2A1(1000 rounds) in wooden crate 	<ul style="list-style-type: none"> • 250 rounds in metal link belt (M13) • 1 metal link belts in metal box M19A1 • 4 metal boxes (1000 rounds) in wooden crate



7.62X51 API, APT



Cal. 7.62x51 mm

API

APT



Element	Material		Weight (g)		Length (mm)		
	API	APT	API	APT	API	APT	
Bullet	Jacket	Tombac	Tombac	8,75 (135 gr)	8,70 (134 gr)	32,20	35,00
	Core	Lead antimony and steel	Lead antimony and steel				
	Tracer mixture	-	Tracer compos.				
	Cup, closure	-	Tombac				
	Filler, point	Incend. compos.					
	Tube	Lead antimony	Tombac				
Cartridge case	Brass		~11,50		51,18		
Propelling charge	Spherical powder		~2,80		-		
Primer	Boxer non-corrosive		0,34		3,30		
Cartridge			Average Q (100) ± 1 g		71,12		

BALISTIC DATA

Cal. 7.62x51 mm with bullet	Energy (J) at 24 m from the muzzle	V _{23,77} (m/s)	P+3Sd (bar)	Accuracy Sdx/Sdy (cm) at 550 m	Tracer visibility
API	min. 2756	833,6 ± 9,14	max. 4450	max. 30	-
APT	min. 2756	812,3 ± 9,14	max. 4450	max. 30	Dim trace to min. 13 m from the weapon, visible from max. 140 m to min. 775 m from the weapon

PACKAGING

Version 1	Version 2
<ul style="list-style-type: none"> • 20 rounds in cardboard box • 28 cardboard boxes (560 rounds) in metal box M2A1 • 2 metal boxes (1120 rounds) in wooden case 	<ul style="list-style-type: none"> • 20 rounds in cardboard box • 10 cardboard boxes (200 rounds) in PVC bag • 5 PVC bags (1000 rounds) in carton case

Used for 7.62x51mm weapon caliber

Penetration API, APT: The bullet shall demonstrate complete penetration of 6 mm thick armor plate, min 420 HB, located 100 meters from the weapon.

Penetration API: At 100 m, the incendiary composition of bullets shall ignite cloth soaked in petrol located behind the armor plate.



7 . 6 2 X 5 1 S N I P E R



Cal. 7.62x51 mm

SNIPER BULLET

FMJBT (10,9 g; 11,7 g)

HPBT (10,9 g; 11,3g)



BALISTIC DATA

Cal. 7.62x51 mm with bullet	V _{23,77} (m/s)	P+3Sd (bar)	Accuracy mean radius
FMJBT (10,9 g)	777 ± 9,1	max. 4450	max. 0,6 MOA except at 100 m: max. 1 MOA
FMJBT (11,7 g)			
HPBT (10,9 g)			2)*
HPBT (11,3 g)			

Used for Sniper Rifles caliber 7.62 mm

TECHNICAL DATA

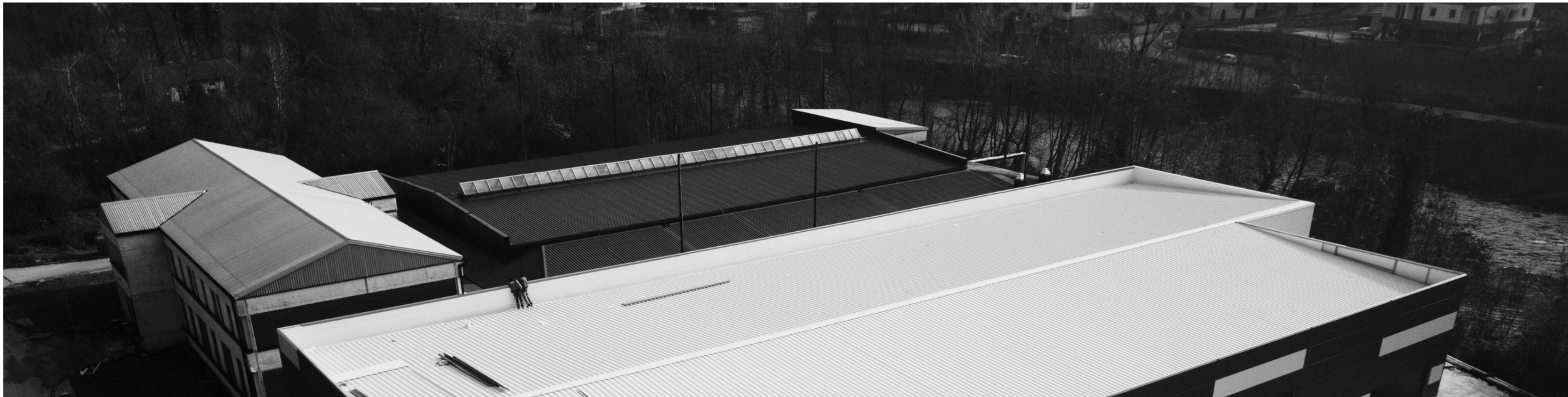
Element		Material
Bullet	Jacket	Tombac
	Core	Lead antimony
Cartridge case		Brass
Propelling charge		Spherical powder
Primer		Boxer non-corrosive

PACKAGING

Version 1	Version 2
<ul style="list-style-type: none"> • 20 rounds in cardboard box • 28 cardboard boxes (560 rounds) in metal box M2A1 • 2 metal boxes (1120 rounds) in wooden crate 	<ul style="list-style-type: none"> • 20 rounds in cardboard box • 10 cardboard boxes (200 rounds) in PVC bag • 5 PVC bags (1000 rounds) in carton case

2)*

Distance (m)	100	200	300	400	500	550	600
Accuracy mean radius (cm)	2, 91	3, 5	5, 24	6, 98	8, 73	9, 6	10, 48

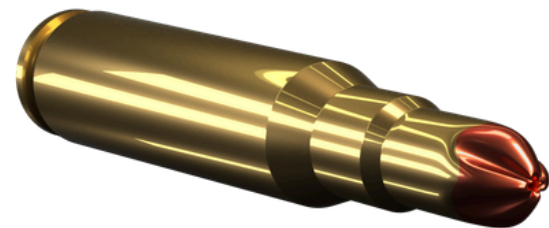


7 . 6 2 B L A N K



Cal. 7.62 mm

M82 BLANK



BALISTIC DATA

Cyclic rate

The cartridges shall operate the M60 Machine Gun at a cyclic rate of not less than 450 cartridges per minute and the M240 Machine Gun at a cyclic rate of not less than 650 cartridges per minute.

TECHNICAL DATA

Element	Material	Weight (g)	Length (mm)
Cartridge case	Brass	~11,8	64, 50
Propelling charge	For blank ammunition	~0,85	-
Primer	Boxer non-corrosive	0, 34	-
Cartridge		Average Q (100) ± 0,4 g	63, 15

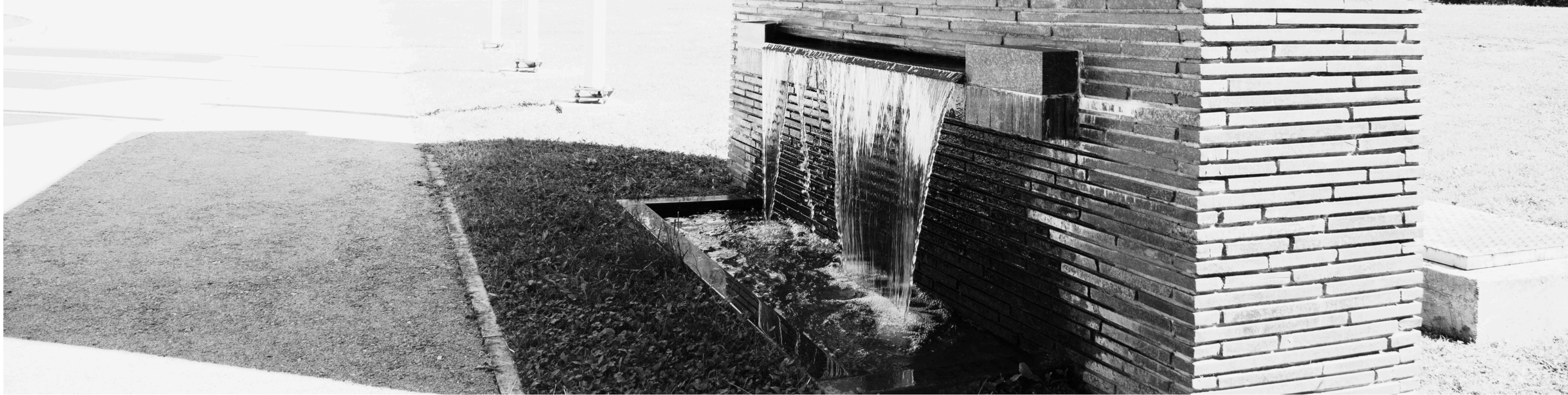
PACKAGING

Version 1	Version 2	Version 3	Version 4
<ul style="list-style-type: none"> • 20 rounds in cardboard box • 28 cardboard boxes (560 rounds) in metal box M2A1 • 2 metal boxes (1120 rounds) in wooden crate 	<ul style="list-style-type: none"> • 20 rounds in cardboard box • 10 cardboard boxes (200 rounds) in PVC bag • 5 PVC bags (1000 rounds) in carton case 	<ul style="list-style-type: none"> • 250 rounds in metal link belt (M13) • 2 metal link belts (500 rounds) in metal box M2A1 • 2 metal boxes (1000 rounds) in wooden crate 	<ul style="list-style-type: none"> • 250 rounds in metal link belt (M13) • 1 metal link belts in metal box M19A1 • 4 metal boxes (1000 rounds) in wooden crate

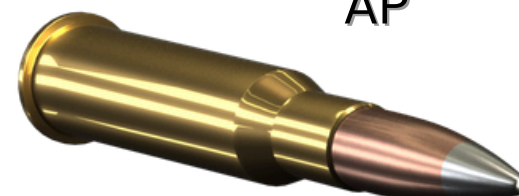
Used for 7.62x51mm weapon caliber



7 . 6 2 X 5 4 R



Cal. 7.62x54 mm R



M30 BALL

M87 TRACER

M90 API

AP



TECHNICAL DATA



Element	Material				Weight (g)				Length (mm)				
	M30 Ball	M87 Tracer	M90 API	AP	M30 Ball	M87 Tracer	M90 API	AP	M30 Ball	M87 Tracer	M90 API	AP	
Bullet	Jacket	Tombac	Copper washer steel strip	Tombac	Tombac	11,00 (170 gr)	9,40 (149 gr)	10,30 (159 gr)	10,30 (159 gr)	30,90	36,60	36,00	36,00
	Core	Lead antimony	Lead antimony	Steel	Steel								
	Tracer mixture	-	Tracer compos.	-	-								
	Cup, closure	-	Tombac	Lead antimony	Lead antimony								
	Filler, point	-	-	Incend. compos.	-								
	Tube	-	Tombac	-	-								
Cartridge case	Brass				~10,00				53,65				
Propelling charge	NC powder				~3,00	~3,17	~3,20	~3,20	-				
Primer	Boxer non-corrosive				0,34				3,30				
Cartridge					Average Q (100) ± 0,5 g				77,16				

BALISTIC DATA

Cal. 7.62x54 mm with bullet	V _{23,77} (m/s)	P (bar)	Accuracy mean radius (cm) at 300 m	Tracer visibility
M30 Ball	min. 780	max. 3898	max. 18	-
M87 Tracer	min. 780	max. 3898	max. 36	Visible trace not less than 1000 m from the weapon
M90 API	min. 780	max. 3898	max. 20	-
AP	min. 780	max. 3898	max. 20	-

PACKAGING

Version 1	Version 2
<ul style="list-style-type: none"> • 15 rounds in cardboard box • 28 cardboard boxes (420 rounds) in metal box M2A1 • 2 metal boxes (840 rounds) in wooden crate 	<ul style="list-style-type: none"> • 15 rounds in cardboard box • 10 cardboard boxes (150 rounds) in PVC bag • 5 PVC bags (750 rounds) in carton case

Penetration M90 API, AP: The bullet shall demonstrate complete penetration of 6 mm thick armor plate, min 420 HB, located 100 meters from the weapon.

Incendiary M90 API: At 100 m, the incendiary composition of bullets shall ignite cloth soaked in petrol located behind the armor plate.



7 . 6 2 X 5 4 R S N I P E R

Cal. 7.62x54 mm R



SNIPER



BALISTIC DATA

Cal. 7.62x54 mm R with bullet	$V_{23,77}$ (m/s)	P (bar)	Accuracy mean radius (cm) at 300
SNIPER	min. 780	max. 3898	max. 6,30

TECHNICAL DATA

Element		Material	Weight (g)	Length (mm)
Bullet	Jacket	Tombac	11,80	32,90
	Core	Lead antimony	(182 gr)	
Cartridge case		Brass	~10,00	53,65
Propelling charge		NCD powder	~3,00	-
Primer		Boxer non-corrosive	0,34	3,30
Cartridge			Average Q (100) ± 0,5 g	77,16

PACKAGING

Version 1	Version 2
<ul style="list-style-type: none"> • 15 rounds in cardboard box • 28 cardboard boxes (420 rounds) in metal box M2A1 • 2 metal boxes (840 rounds) in wooden crate 	<ul style="list-style-type: none"> • 15 rounds in cardboard box • 10 cardboard boxes (150 rounds) in PVC bag • 5 PVC bags (750 rounds) in carton case

A black and white photograph of two soldiers in a field. They are both lying on their stomachs, aiming rifles. The soldier on the right is wearing a cap with 'THE YAVUZ' written on it. A black horizontal bar is overlaid across the middle of the image, containing the text '7.62 RBLANK'.

7 . 6 2 R B L A N K

Cal. 7.62 mm R



BLANK



BALISTIC DATA

Cyclic rate

The cartridges shall operate the M84 Machine Gun at a cyclic rate of not less than 600 cartridges per minute.

Used for M84 Machine Gun

TECHNICAL DATA

Element	Material	Weight (g)	Length (mm)
Cartridge case	Brass	~11,90	72,00
Propelling charge	For blank ammunition	~0,85	-
Primer	Boxer non-corrosive	0,34	3,30
Cartridge		Average Q (100) ± 0,4 g	72,50

PACKAGING

Version 1	Version 2
<ul style="list-style-type: none"> • 15 rounds in cardboard box • 28 cardboard boxes (420 rounds) in metal box M2A1 • 2 metal boxes (840 rounds) in wooden crate 	<ul style="list-style-type: none"> • 15 rounds in cardboard box • 10 cardboard boxes (150 rounds) in PVC bag • 6 PVC bags (900 rounds) in carton case



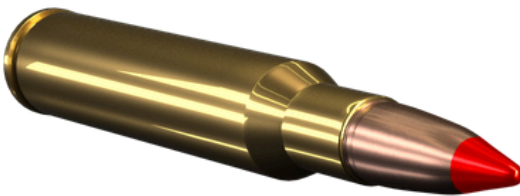
7 . 6 2 X 6 3

Cal. 7.62x63 mm



M2 BALL

M25 TRACER



TECHNICAL DATA

Element		Material		Weight (g)		Length (mm)	
		M2 Ball	M25 Tracer	M2 Ball	M25 Tracer	M2 Ball	M25 Tracer
Bullet	Jacket	Tombac	Tombac	9, 85	9, 35	28, 82	36, 50
	Core	Lead antimony	Lead antimony				
	Tracer mixture	-	Tracer compos.	(152 gr)	(144 gr)		
	Cup, closure	-	Tombac				
Cartridge case		Brass		~12,90		63, 35	
Propelling charge		NCD powder		~3,10	~3,00	-	
Primer		Boxer non-corrosive		0, 34		3, 30	
Cartridge				Average Q (100) ± 1 g		84, 80	

BALISTIC DATA

Cal. 7.62x63 mm with bullet	V _{23,77} (m/s)	P (bar)	Accuracy mean radius (cm) at 550 m	Tracer visibility
M2 Ball	835 ± 9,1	max. 3447	max. 19,05	-
M25 Tracer	812 ± 9,1	max. 3447	max. 45,7	Dim trace to min. 13 m from the weapon, visible from max. 92 m to min. 823 m from the weapon

PACKAGING

Version 1	Version 2
<ul style="list-style-type: none"> • 15 rounds in cardboard box • 10 cardboard boxes in PVC bag • 8 PVC bags (1200 rounds) in wooden case 	<ul style="list-style-type: none"> • 250 rounds in metal link belt M1 • 1 metal link belt in metal box M19A1 • 4 metal boxes (1000 rounds) in wooden crate



7 . 6 2 B L A N K



Cal. 7.62 mm

M1909 BLANK



TECHNICAL DATA

Element	Material	Weight (g)	Length (mm)
Cartridge case	Brass	~12,95	63, 70
Propelling charge	For blank ammunition	~0,70	-
Primer	Boxer non-corrosive	0, 34	3, 30
Cartridge		Average Q (100) ± 1 g	63, 30

PACKAGING

Version 1	Version 2
<ul style="list-style-type: none"> • 15 rounds in cardboard box • 10 cardboard boxes in PVC bag • 8 PVC bags (1200 rounds) in wooden case 	<ul style="list-style-type: none"> • 250 rounds in metal link belt M1 • 1 metal link belt in metal box M19A1 • 4 metal boxes in wooden crate (1000 rounds)

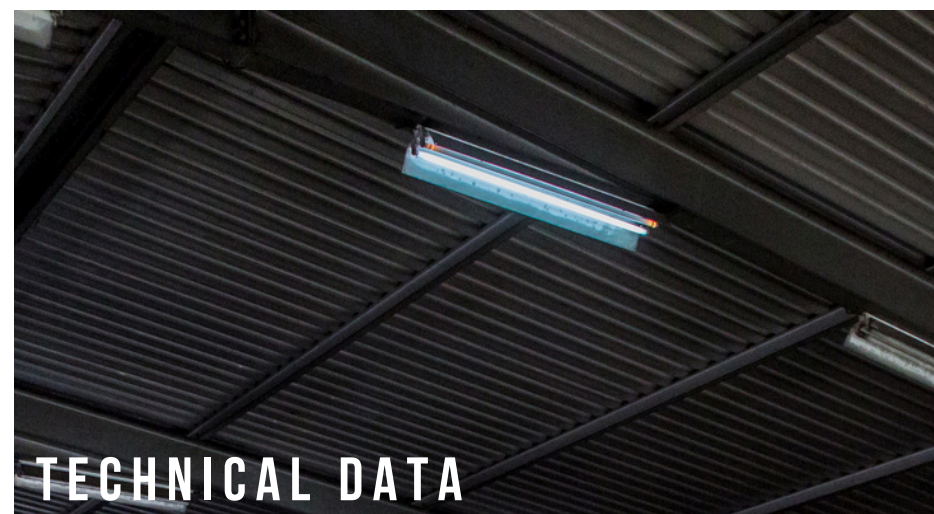


7 . 9 X 5 7

Cal. 7.9x57 mm

M49 BALL

M70 TRACER



TECHNICAL DATA

Element	Material		Weight (g)		Length (mm)	
	M49 Ball	M70 Tracer	M49 Ball	M70 Tracer	M49 Ball	M70 Tracer
Bullet	<i>Jacket</i>	<i>Tombac</i>	12,85 (198 gr)	12,55 (194 gr)	34,00	38,80
	<i>Core</i>	<i>Lead antimony</i>				
	<i>Tracer mixture</i>	<i>-</i>				
	<i>Cup, closure</i>	<i>Tombac</i>				
	<i>Tube</i>	<i>-</i>				
Cartridge case	<i>Brass</i>		~11,00		57,00	
Propelling charge	<i>NCD powder</i>		~3,00	~2,90	-	
Primer	<i>Boxer non-corrosive</i>		0,34		3,30	
Cartridge			Average Q (100) ± 1 g		80,60	

BALISTIC DATA

Cal. 7.9x57mm with bullet	V _{23,77} (m/s)	P (bar)	Accuracy mean radius (cm) at 300 m	Tracer visibility
M49 Ball	720 ± 10	max. 2940	max. 9	-
M70 Tracer	705 ± 10	max. 2940	max. 15	Dim trace to min. 13,7 m from the weapon, visible from max. 115 m to min. 900 m from the weapon

PACKAGING

Version 1	Version 2
<ul style="list-style-type: none"> • 15 rounds in cardboard box • 10 cardboard boxes in PVC bag • 8 PVC bags (1200 rounds) in wooden case 	<ul style="list-style-type: none"> • 15 rounds in cardboard box • 36 cardboard boxes in metal box M2A1 (540 rounds) • 2 metal boxes in wooden crate (1080 rounds)



12.7 X 99



Cal. 12.7x99 mm

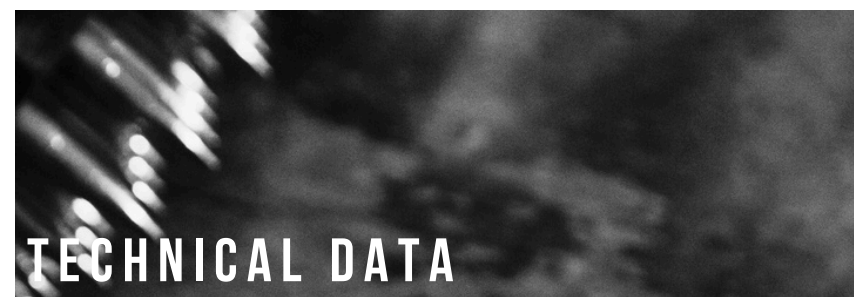
M33 BALL

M17 TRACER

M8 API

M20 APIT

M2 AP



Element	Material					Weight (g)					Length (mm)									
	M33 Ball	M17 Tracer	M8 API	M20 APIT	M2 AP	M33 Ball	M17 Tracer	M8 API	M20 APIT	M2 AP	M33 Ball	M17 Tracer	M8 API	M20 APIT	M2 AP					
Bullet	Jacket	Tombac	Tombac	Tombac	Tombac	42, 31	40, 05	42, 65	40, 12	42, 56	58, 67	58, 67	58, 67	58, 67	58, 67					
	Core	Steel	Steel	Steel	Steel															
	Tracer mix.	-	Tracer compos.	-	Tracer compos.											(653 gr)	(618 gr)	(661 gr)	(620 gr)	(656 gr)
	Cup, closure	Lead antim.	Tombac	Lead antimony	Tombac											Lead antim.				
	Filler, point	Borax	Borax	Thermit comp.	Thermit compos.											Borax				
Cartridge case	Brass					~55,10					99, 31									
Propelling charge	NCD powder					~15,10	~14,90	~15,10	~14,90	~15,10	-									
Primer	Boxer non-corrosive					1, 23					5, 54									
Cartridge						Average Q (100) ± 2g					138, 43									

BALISTIC DATA

Cal. 12.7x99 mm with bullet	V _{23,77} (m/s)	P+3Sd (bar)	Accuracy Sdx/Sdy (cm) at 550 m	Tracer visibility
M33 Ball	885,4 ± 9,1	max. 4500	max. 30	-
M17 Tracer	885,4 ± 9,1	max. 4500	max. 40	Visible trace of full luminosity from a point not greater than 200 m from the muzzle of the weapon to a point not less than 1500 m from the muzzle
M8 API	885,4 ± 9,1	max. 4500	max. 30	-
M20 APIT	885,4 ± 9,1	max. 4500	max. 40	Visible trace of full luminosity from a point not greater than 200 m from the muzzle of the weapon to a point not less than 1000 m from the muzzle
M2 AP	885,4 ± 9,1	max. 4500	max. 30	-

Penetration M8 API, M2 AP, M20 APIT: The bullet shall completely perforate 22 mm thick armor plate, hardness 321-375 HB, placed at 100 m from the muzzle of the weapon.

Incendiary flash M8 API, M20 APIT: The incendiary composition of bullets shall ignite produce an incandescent flash when fired against an target at 160 m.

PACKAGING

Version 1	Version 2	Version 3
<ul style="list-style-type: none"> • 140 rounds in metal box M2A1 • 2 metal boxes (280 rounds) in wire bound wooden box 	<ul style="list-style-type: none"> • 10 rounds in cardboard box • 5 cardboard boxes (50 rounds) in PVC bag • 2 PVC bags (100 rounds) in carton case 	<ul style="list-style-type: none"> • 100 rounds in metal link belt (M9) • 1 metal link belts in metal box M2A1 • 2 metal boxes in wire bound wooden box (200 rounds)



12.7X99 APEI, APT

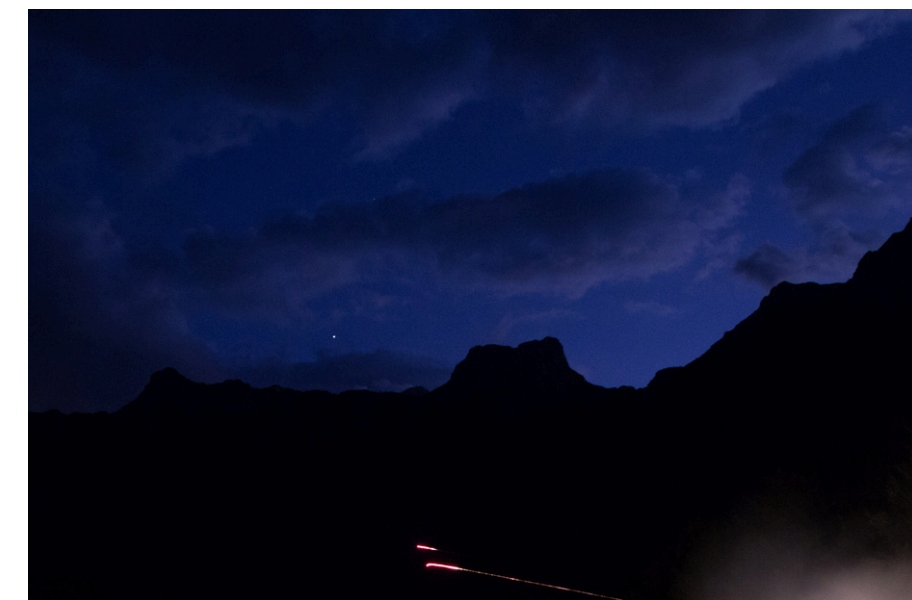


Cal. 12.7x99 mm



M02 APEI

APT



Element		Material		Weight (g)		Length (mm)	
		M02 APEI	APT	M02 APEI	APT	M02 APEI	APT
Bullet	Jacket	Tombac	Tombac	42, 65 (661 gr)	40, 05 (618 gr)	58, 67	58, 67
	Core	Steel	Steel				
	Filler, point	Thermit - explosive comp.	Borax				
	Cup, closure	Lead antimony	Tombac				
Cartridge case		Brass		~55,10		99, 31	
Propelling charge		NCD powder		~15,10	~14,90	-	
Primer		Boxer non-corrosive		1, 23		5, 54	
Cartridge				Average Q (100) ± 2g		138, 43	

BALISTIC DATA

Cal. 12.7x99 mm with bullet	V _{23,77} (m/s)	P+3Sd (bar)	Accuracy Sdx/Sdy (cm) at 550 m	Tracer visibility
M02 APEI	885,4 ± 9,1	max. 4500	max. 30	-
APT	885,4 ± 9,1	max. 4500	max. 40	Visible trace of full luminosity from a point not greater than 200 m from the muzzle of the weapon to a point not less than 1000 m from the muzzle

Penetration M02 APEI, APT: The bullet core or bullet of the cartridge shall completely perforate 22 mm of armor plate (Hardness 321-375 HB) placed at 100 m from the muzzle of the weapon.

Inciendiary flash M02 APEI: The incendiary bullets shall ignite and produce an incendiary flash in less than 600 mm behind an steel plate 3,5 mm placed at 160 m from the muzzle at zero (0°) degrees of obliquity (normal to the line of fire).

Explosive effect M02 APEI: Explosive bullets shall function and produce at least 8 perforations in a 0.5 mm aluminum witness plate located 1200 mm behind an steel target plate of 3,5 mm nominal thickness placed not less than 160 meters from the muzzle at zero degrees obliquity (normal to the line of fire).

PACKAGING

Version 1	Version 2
<ul style="list-style-type: none"> • 140 rounds in metal box M2A1 • 2 metal boxes (280 rounds) in wire bound wooden box 	<ul style="list-style-type: none"> • 100 rounds in metal link belt (M9) • 1 metal link belts in metal box M2A1 • 2 metal boxes in wire bound wooden box (200 rounds)

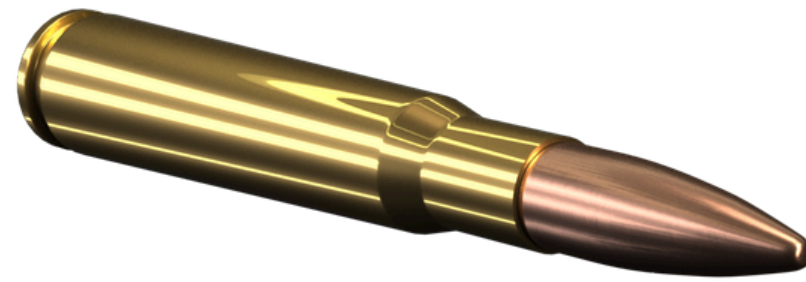


1 2 . 7 X 9 9 S N I P E R



Cal. 12.7x99 mm

M33 SNIPER



BALISTIC DATA

Cal. 12.7x99 mm with bullet	V _{23,77} (m/s)	P+3Sd (bar)	Accuracy mean radius
M33 SNIPER	885,4± 9,1	max. 4500	R _{mean} ≤ 1.33 MOA R _{mean} ≤ 21.3 cm at 550 m (600 yards)

TECHNICAL DATA

Element	Material	
Bullet	Jacket	Tombac
	Core	Steel
	Cup, closure	Lead antimony
	Filler, point	Borax
Cartridge case	Brass	
Propelling charge	NCD powder	
Primer	Boxer non-corrosive	

PACKAGING

Version 1	Version 2
<ul style="list-style-type: none"> • 140 rounds in metal box M2A1 • 2 metal boxes (280 rounds) in wooden crate 	<ul style="list-style-type: none"> • 10 rounds in cardboard box • 5 cardboard boxes (50 rounds) in PVC bag • 2 PVC bags (100 rounds) in carton case



1 2 . 7 X 9 9 S P E C I A L B U L L E T S



Cal. 12.7x99 mm

SPECIAL BULLETS

Solid Ball

Solid AP

Solid API



BALISTIC DATA

Cal. 12.7x99 mm with bullet	P+3Sd (bar)	Accuracy mean radius
Solid Ball	max. 4500	$R_{mean} \leq 1 \text{ MOA}$ $R_{mean} \leq 32.01 \text{ cm at } 1100 \text{ m}$ (1200 yards)
Solid AP	max. 4500	$R_{mean} \leq 1,1 \text{ MOA}$ $R_{mean} \leq 35,2 \text{ cm at } 1100 \text{ m}$ (1200 yards)
Solid API	max. 4500	$R_{mean} \leq 1,2 \text{ MOA}$ $R_{mean} \leq 38,4 \text{ cm at } 1100 \text{ m}$ (1200 yards)

Used for Sniper Rifles caliber 12.7mm (.50)

Penetration Solid AP, Solid API: The bullet shall completely perforate 20mm thick armor plate (hardness 302-341 HB) placed at 500 m from the muzzle of the weapon.

Incendiary Solid API: At 500 m, the incendiary composition of bullets shall ignite cloth soaked in petrol located behind the armor plate.

TECHNICAL DATA

Element	Material			
	Solid Ball	Solid AP	Solid API	
Bullet	Jacket	-	Brass	Brass
	Core	CuZn39Pb3	Special steel	Special steel
	Filler			Thermite comp.
Cartridge case		Brass		
Propelling charge		NCD powder		
Primer		Boxer non-corrosive		

PACKAGING

Version 1	Version 2
<ul style="list-style-type: none"> • 10 round in cardboard box • 10 cardboard boxes (100 rounds) in metal box M2A1 • 2 metal boxes (200 rounds) in wire bound wooden crate 	<ul style="list-style-type: none"> • 10 rounds in cardboard box • 5 cardboard boxes (50 rounds) in PVC bag • 2 PVC bags (100 rounds) in carton case



1 2 . 7 X 9 9 B L A N K

Cal. 12.7x99 mm

M1A1 BLANK



BALISTIC DATA

Cyclic rate

The blank cartridge shall operate the M2 HB machine gun at an average cycle rate of not less than 450 cartridges per minute, and not more than 600 cartridges per minute at -18°C to +52°C

Used for 12.7x99 mm caliber weapon

TECHNICAL DATA

Element	Material	Weight (g)	Length (mm)
Cartridge case	Brass	~55,10	99, 46
Propelling charge	NC powder	~2,80	-
Primer	Boxer non-corrosive	1, 23	-
Cartridge		Average Q (100) ± 1 g	99, 30

PACKAGING

Version 1	Version 2	Version 3
<ul style="list-style-type: none"> • 140 rounds in metal box M2A1 • 2 metal boxes (280 rounds) in wooden crate 	<ul style="list-style-type: none"> • 10 rounds in cardboard box • 5 cardboard boxes (50 rounds) in PVC bag • 2 PVC bags (100 rounds) in carton case 	<ul style="list-style-type: none"> • 100 rounds in metal link belt (M9) • 1 metal link belts in metal box M2A1 • 2 metal boxes in wire wooden crate (200 rounds)



1 2 . 7 X 1 0 8

Cal. 12.7x108 mm



B32 API

BZT44 APIT

BALL

AP

TRACER

TECHNICAL DATA

Element	Material					Weight (g)					Length (mm)						
	B32 API	BZT44 APIT	Ball	AP	Tracer	B32 API	BZT44 APIT	Ball	AP	Tracer	B32 API	BZT44 APIT	Ball	AP	Tracer		
Bullet	Jacket	Tombac plated steel strip or cooper washer steel strip	Tombac plated steel strip or cooper washer steel strip	Tombac plated steel strip or cooper washer steel strip	Tombac plated steel strip or cooper washer steel strip	Tombac plated steel strip or cooper washer steel strip											
	Core	Steel	Steel	Steel	Steel	Steel	48, 00	44, 00	48, 00	48, 00	44, 00						
	Tracer mix.	-	Tracer compos.	-	-	Tracer compos.	(740 gr)	(679 gr)	(740 gr)	(740 gr)	(679 gr)	64, 00	64, 50	64, 60	64, 60	64, 50	
	Tube	-	Tombac	-	-	Tombac											
	Filler, point	Thermit compos.	Thermit compos.	Borax.	Borax	Borax											
	Liner	Lead antim.	Lead antim.	Lead antim.	Lead antim.	Lead antim.											
Cartridge case	Brass					~67,00					108						
Propelling charge	NC powder					~16,50	~16,50	~16,50	~16,50	~16,50	-						
Primer	Berdan					1, 10					4, 15						
Cartridge						Average Q (100) ± 2g					147, 00						

BALISTIC DATA

Cal. 12.7x108 mm with bullet	V _{23,77} (m/s)	P (bar)	Accuracy mean radius (cm) at 300 m	Tracer visibility
B32 API	min. 810	max. 3114	max. 20	-
BZT44 APIT	min. 810	max. 3114	max. 20	Visible trace not less than 1000 m from the weapon
Ball	min. 810	max. 3114	max. 20	-
AP	min. 810	max. 3114	max. 20	-
Tracer	min. 810	max. 3114	max. 20	Visible trace not less than 1000 m from the weapon

Used for 12.7 x 108 mm caliber weapons

Penetration B32 API, AP: The bullet shall demonstrate penetration 22 mm thick armor plate (321-375 HB) at 100 meters from the weapon.
 Penetration BZT44 APIT: The bullet shall demonstrate penetration 15 mm thick armor plate (321-375 HB) at 100 meters from the weapon.
 Incendiary B32 API, BZT 44 APIT: At 160 m, the incendiary composition of bullets shall ignite and produce an incendiary flash in less than 600 mm behind an steel target plate of 3,5 mm nominal thickness, 55-70 HRB.

PACKAGING

Version 1	Version 2	Version 3	Version 4
<ul style="list-style-type: none"> • 104 rounds in sheet metal • 2 sheet metal boxes (208 rounds) in wooden crate 	<ul style="list-style-type: none"> • 50 rounds in one DShK belt • 1 DShK belts in one metal box (50 rounds) • 2 metal boxes in wooden crate (100 rounds) 	<ul style="list-style-type: none"> • 10 rounds in cardboard box • 5 cardboard boxes (50 rounds) in PVC bag • 2 PVC bags (100 rounds) in carton case 	<ul style="list-style-type: none"> • 60 rounds in one DShK belt • 1 DShK belts in one DShK metal box (60 rounds) • 3 DShK metal boxes in wooden crate (180 rounds)

A black and white photograph showing a large quantity of 12.7x108 caliber sniper bullets. The bullets are piled together in a metal container, with some showing their distinctive pointed tips and others showing the base. The lighting creates strong highlights and shadows, emphasizing the metallic texture and sharp points of the ammunition.

12.7 X 108 S N I P E R



Cal. 12.7x108 mm

SNIPER



BALISTIC DATA

Cal. 12.7x108 mm with bullet	V _{23,77} (m/s)	P (bar)	Accuracy mean radius (cm) at 300 m
SNIPER	min. 810	max. 3114	max. 15

TECHNICAL DATA

Element		Material	Weight (g)	Length (mm)
Bullet	Jacket	Tombac plated steel strip or cooper washer steel strip	48,00 (755 gr)	64,00
	Core	Steel		
	Filler, point	Borax		
	Liner	Lead antimony		
Cartridge case		Brass	~67,00	108,00
Propelling charge		NC powder	~17,00	-
Primer		Berdan	1,10	4,15
Cartridge			Average Q (100) ± 2 g	147,00

PACKAGING

Version 1	Version 2
<ul style="list-style-type: none"> • 104 rounds in sheet metal box • 2 sheet metal boxes (208 rounds) in wooden crate 	<ul style="list-style-type: none"> • 10 rounds in cardboard box • 5 cardboard boxes (50 rounds) in PVC bag • 2 PVC bags (100 rounds) in carton case

Used for 12.7x108 mm caliber weapons



BUREAU VERITAS

“IGMAN” d.d. Konjic successfully adopted new versions of three international quality management standards: ISO 9001:2015, ISO 14001:2015, and ISO 45001. All these certificates are a proof that we meet the strictest quality and safety standards in the field of highly sophisticated ammunition production.



BISNODE GROUP

Platinum Creditworthiness Rating (AAA)



LRC BIS

According to criteria of the creditworthiness assessment company, IGMAN was found to be member of the elite group of financially most reliable companies in Bosnia and Herzegovina.



100 LARGEST IN BOSNIA AND HERZEGOVINA

1st place for 2024 in the Large Company category – MILITARY INDUSTRY



IGMAN D.D. KONJIC / DONJE POLJE 42, 88400, KONJIC / BOSNIA AND HERZEGOVINA / +387 36 726 276 / INFO@IGMAN.CO.BA / WWW.IGMAN.CO.BA

